

# DuraLabel TORO<sup>®</sup>



Portable Standalone Printer



Dimensions:  
13.5"W x 10.25"D x 8.5"H



Call 888.637.3893 or visit us at [DuraLabel.com](http://DuraLabel.com)

# DuraLabel TORO

Toro is DuraLabel's most advanced label printer. Toro comes complete in one lightweight unit. With optional battery power, Toro can make labels on the spot when and where you need them.

## Standalone Capability

Toro is a completely independent printing system including built-in keyboard, touchscreen and software.

## Network Independence

Toro does not require IT support or network connectivity. Toro's embedded software gives you independence.

## Mobility

Take Toro anywhere in your facility or to a remote site. Toro weighs in at 13.8 lbs. (without supply).

## Toro Supplies

### Industrial Strength Vinyl

Supplies are industrial-grade, UV and chemical resistant, durable vinyl which will last for years - indoors and out. This continuous vinyl is available in widths from 1/2" to 4" in 17 standard colors.



View additional and specialty colors at [DuraLabel.com](http://DuraLabel.com)

### Ribbon

Premium quality thermal transfer ribbons are UV and chemical resistant, engineered to withstand harsh environments. Available in 7 colors. Specialty ribbons also available.



Let Toro do the work. **Smart Chip** automatically recognizes supply types in your printer. See backside for additional benefits.

## Applications



- OSHA Compliance
- Arc Flash
- NFPA & RTK
- Equipment
- Pipe Markers
- ANSI Compliance
- Lean Manufacturing
- Maintenance
- Electrical Panels
- 5S
- Kanban
- Racks, Shelves & Bins
- Valve Tags
- Barcode
- Kaizen
- Safety
- Lockout/Tagout
- Wire Marking
- Name Tents
- Bilingual
- Aisle Markers and more...

## Software Included!

### DuraSuite™ Labeling Software

Pre-installed software integrates both industrial and safety labeling templates with popular symbols for effortless printing. DuraSuite Includes:

- ASME/ANSI, IIAR & general pipe marking templates
- RTK/NFPA labeling
- GHS labeling
- Arc Flash templates
- Custom labels

#### Extras Include:

- Label Template Library
- OpenOffice.org
- 1700+ Symbol Library



### LabelForge

Create custom labels and signs with LabelForge Software. LabelForge offers an intuitive display for label design.





## Save Money with Kits

Many kits are available, including OSHA, Pipe Marking and 5S, or you can customize your own kit. Call **888.637.3893** today.

**We can  
customize  
your kit.**



### Arc Flash Kit

Comes complete with warning and danger arc flash die-cut labels. Use Toro's built-in arc flash templates to make sure you're compliant.



### Mobile Kit

Take Toro on the go with the Mobile Kit. Includes carrying case for Toro and supplies, and a battery good for three hours of printing in the field.

## Specialty Supplies



### High-Tack

Adheres to difficult-to-label surfaces - *an extremely durable & permanent solution!*



### High-Temp

Designed to withstand extreme temperatures from  $-40^{\circ}\text{F}$  to  $300^{\circ}\text{F}$ .



### Reflective

Comes in a variety of colors - reflective signs and labels are *great in low-light environments.*



### DuraTag™

Print directly on this tear-resistant tag stock. *Create custom designs!*



## NO POWER? NO PROBLEM!

**Toro offers an optional battery and charger giving you freedom to print anytime and anywhere without an external power source.**

The Toro battery is a Lithium-ion battery that mounts into the back of the Toro. The battery is good for more than 300 lifetime charges and is warranted for 9 months from the date of purchase.

- 3 hour continuous print time (equivalent to 1,000 4"x6" labels)
- 30 hour battery life with printer in sleep mode
- 3 hour charge time when battery is < 10% power



No power? No network?

# No problem with Toro.

Toro is a complete printing system in one mobile unit.



## Touchscreen

9" landscape touchscreen



## Keyboard

Full-size QWERTY keyboard with wireless mouse



## Mobility

No plug/outlet required with battery; print on-site or at remote location



## Easy Access

Quick and simple supply loading and changing

## Specifications

### Printer

- Type: thermal transfer
- Maximum print width: 4.0"
- Unlimited print length with DuraSuite Labeling Software

### Label Stock

- Type: continuous, die-cut and custom printed rolls
- Capacity: 140 ft.

### Interface

- Full-sized flip down keyboard
- Memory: 4GB flash, 1GB SDRAM
- Communication interface: USB-A, USB-B, optional print server port

### Power Requirements

- Input Voltage: 24V DC, 5A
- *DuraLabel label and sign printers have worldwide voltage capability*

*DuraLabel Toro specifications subject to change*

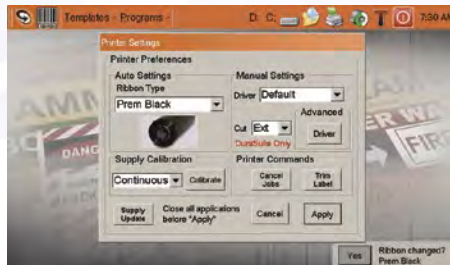
## Toro delivers trouble-free printing

Built-in Smart Chip technology makes changing supplies and using Toro fast and easy.



### The Smart Chip:

- Auto selects the correct printer driver and supply type
- Shows remaining supply
- Prompts for calibration and ribbon changes



**FREE M&Ms**  
with every order!



See Toro Videos

